

## OXBOW AT HOME

# Native Box Turtles

## Wildlife Wednesday “Pre-Visit” Questions

Premieres Live April 8<sup>th</sup> at Noon (EST) on Facebook @CSUOxbowMeadows

### Vocabulary

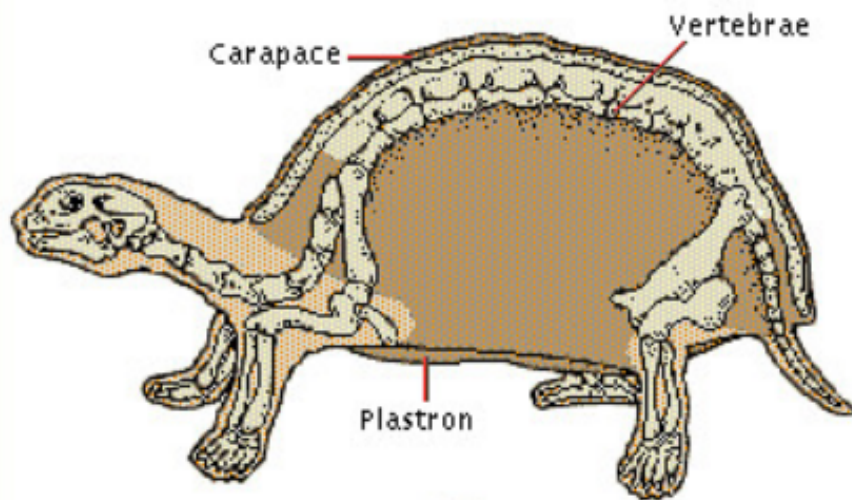
**Camouflage** is the coloration, pattern, or markings to disguise or blend into surroundings.

The shell of a turtle is covered in specialized scales called scutes, which are made of **keratin**.

A **native** plant or animal that has evolved to live in its specific habitat range.

A **non-native** plant or animal is living outside of its normal habitat range.

### Box Turtle Anatomy



Explain in one or two sentences why you think these animals are called “box turtles.” What do you notice about turtle’s bone structure?

**Box turtles’ shells are attached to their vertebrate. They have lots of little backbones and can pull their head, arms, and legs inside their shell and close it tightly, using a hinge on the bottom of its plastron, similar to how a box closes.**

## OXBOW AT HOME

Can a turtle leave its shell throughout its lifetime? Explain your reasoning.

**A turtle can never exit its shell because it cannot detach from its backbone and the turtle's backbone is connected to its shell.**

Adult Box Turtles are *omnivores*. What type of food do omnivores eat?

**Omnivores eat plants like vegetables and fruits, and meat, like bugs, spiders, meat, and fish.**

Box Turtles are *opportunistic* feeders. What do you think that means?

**Opportunistic feeders will eat anything that they have the chance, or opportunity, to eat. They will even eat dead, rotting matter.**

Oxbow has two 3-Toed Box Turtles and one Ornate Box Turtle. If each turtle eats 5 grams of food per day and these turtles live in the same exhibit, how many grams of salad do they eat per week?

**3 turtles x 5 grams each = 15 grams per day**

**15 grams per day x 7 days per week = 105 grams per week**

Do you think a turtle has teeth? Why or why not?

**A turtle does not have teeth. Instead, they have a mouth structure similar to a bird, called a beak. It is strong and often sharp to help them tear foods to eat.**

Stay tuned for Wildlife Wednesdays at Noon (EST) on Facebook @CSUOxbowMeadows