

Name _____

1 Spy, With My Little Eye

A Carnivore

(We eat fish, meat and animal products)

Name _____

1 Spy, With My Little Eye

A Herbivore

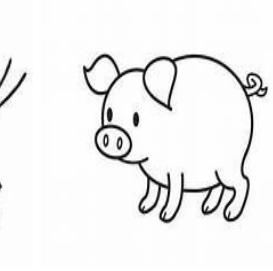
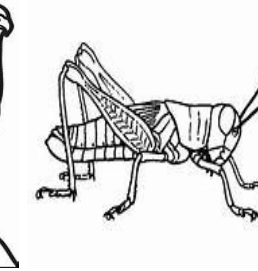
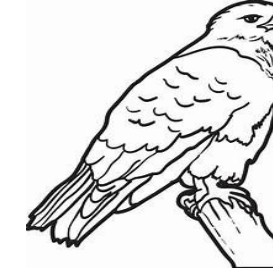
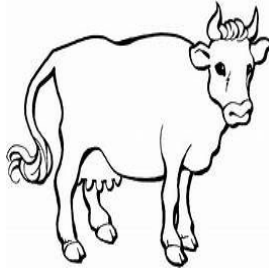
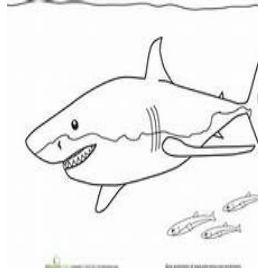
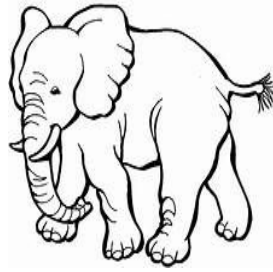
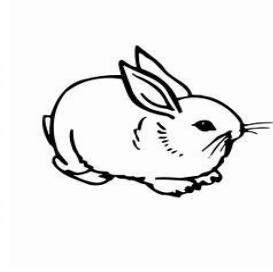
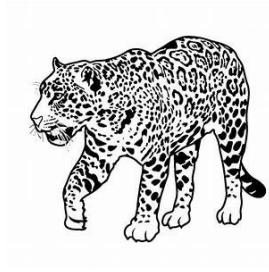
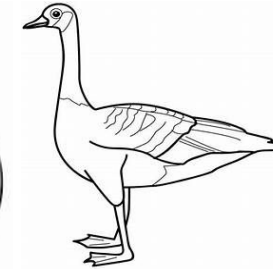
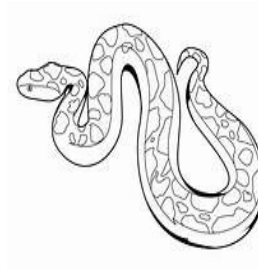
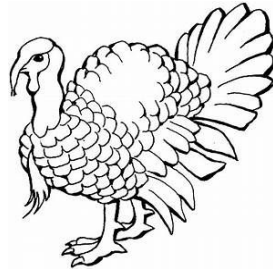
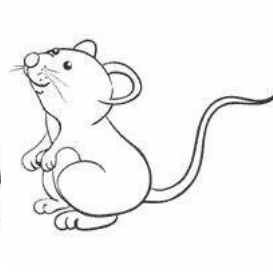
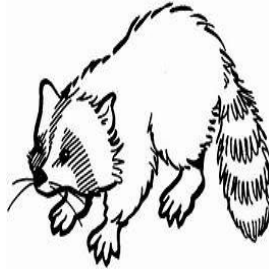
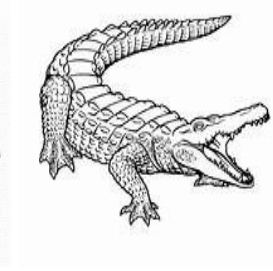
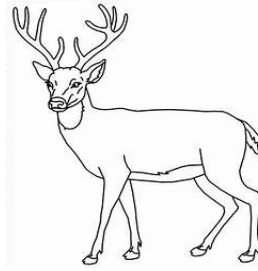
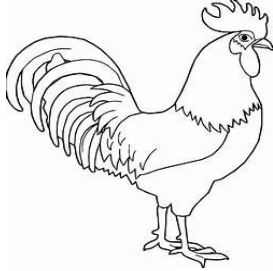
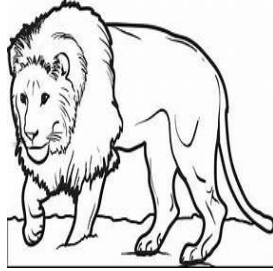
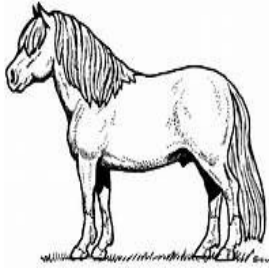
(We eat plants)

Name _____

1 Spy, With My Little Eye

A Omnivores

(We eat plants, fish and meat)

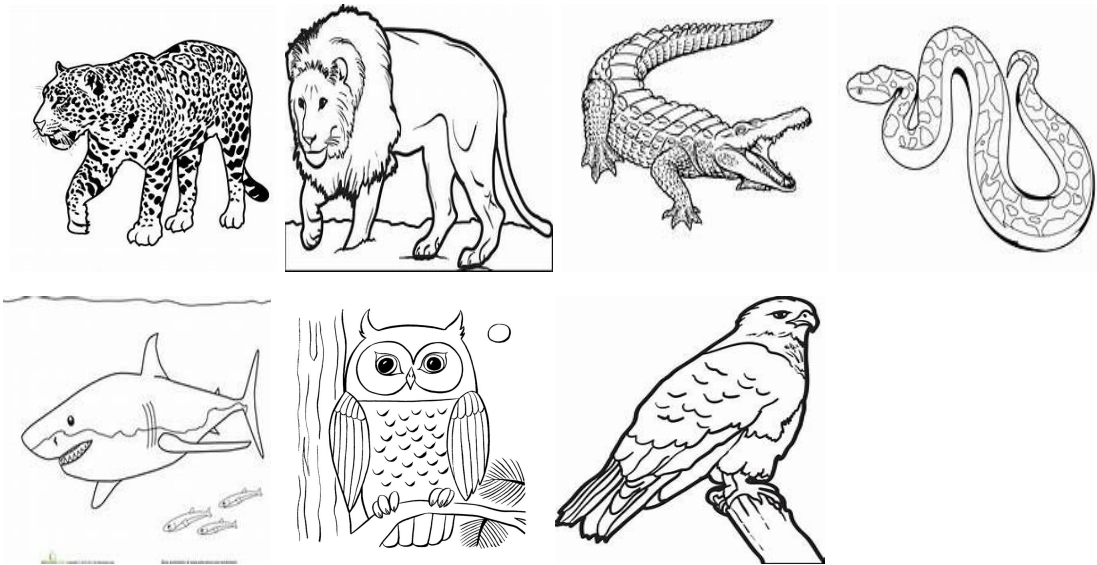


Answer Key

1 Spy, With My Little Eye

A Carnivore

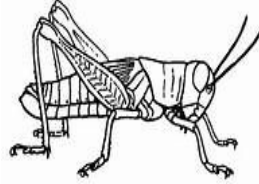
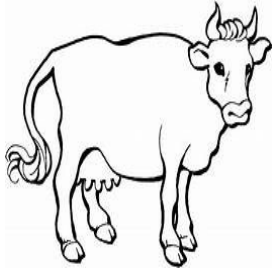
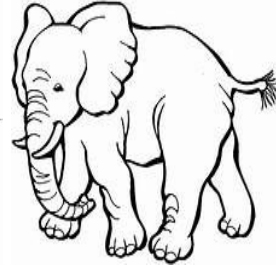
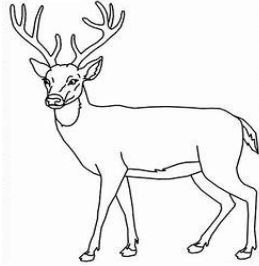
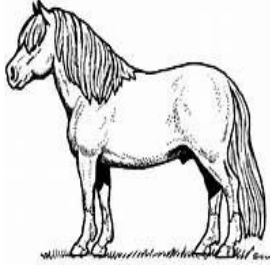
(We eat fish, meat and animal products)



Answer Key
1 Spy, With My Little Eye

A Herbivore

(We eat plants)

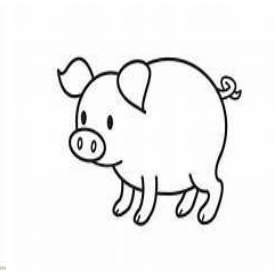
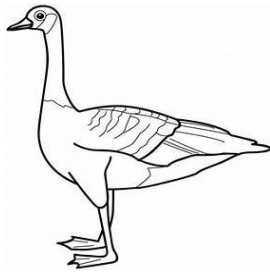
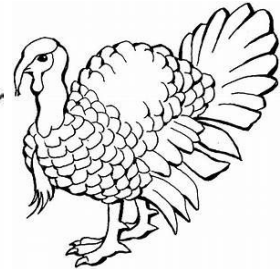
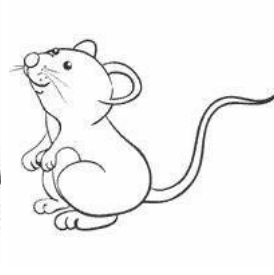
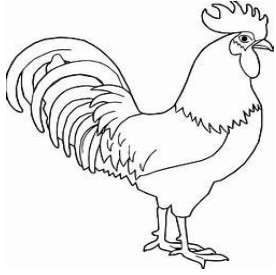


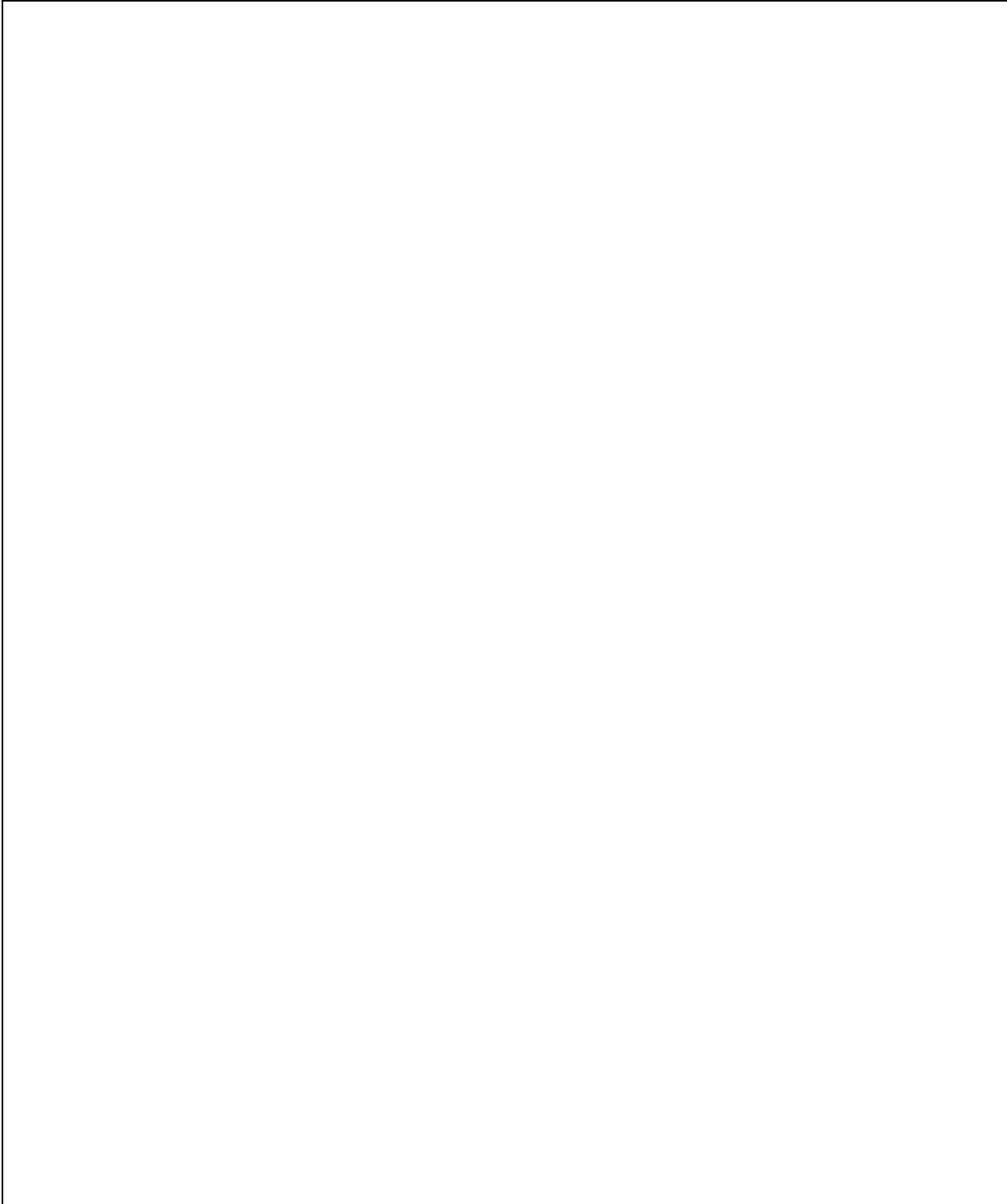
Answer Key

1 Spy, With My Little Eye

A Omnivores

(We eat plants, fish and meat)





Teacher Step By Step Instructions:

The class has already previously learned about carnivores, herbivores, and omnivores. This fun activity for the children can be done in groups or individually.

1. Each student or group should receive 4 sheets of paper.
2. Once the children receive the paper with the animals on it they can color them.
3. After they have colored all of the animals, they can cut each one individually.
4. Once they complete the coloring, they will divide each picture into the 3 categories: carnivore, herbivore, and omnivore.
5. Next they will use their glue to glue each animal on the correct sheet of paper that is labeled and provided for them.
6. That's it! We have now learned more about the way animals eat and the 3 different types of categories that you are in depending on what you eat.

Items Needed:

4 sheets of paper provided by teacher

Glue

Scissors

Crayons

Good Morning Class,

Do you all remember learning about carnivore, omnivores, and herbivores?

Today we are going to do a full activity of coloring and placing the right name in the right group by what they eat.

First, we are going to color all the animals on the paper.

Next, we are going to cut all of the animals out to separate them.

Then, we will put them in each category that they belong in by what they eat.

Finally, you will glue them to that paper.

AND WE ARE DONE!

Remember:

Carnivores eat meat,

Herbivores eat plants

And

Omnivore eat both meat and plants