

Grade Level: 1st - 3rd grade Subject Focus: Parts of Fish and Fish Life Cycle

Date: June 4, 2020

Georgia Standard of Excellence (GSE)	S2L1. Obtain, evaluate, and communicate information about the life cycles of different living organisms. a. Ask questions to determine the sequence of the life cycle of common animals in your area: a mammal such as a cat, dog or classroom pet, a bird such as a chicken, an amphibian such as a frog, and an insect such as a butterfly. d. Develop models to illustrate the unique and divers life cycles of organisms other than humans.
Learning Target(s) Targets must be aligned to the GSE and with the assessment(s); targets should be stated as measurable (e.g. ‘I can’ statements for students).	“I can label the parts of a fish and I know the life cycle of a fish.”
Materials What resources will be needed to engage students? Be as precise as possible	Paper (colored and white), crayons, pencil, scissors, a brad, glue and tape
Oxbow @ Home Project Describe your project. Include the steps and directions that students and/or parents would need to follow	<ol style="list-style-type: none">1. After the students have watched and read all of the provided information, including the new video about the Life Cycle of Fish, they get to put their learning to test.2. The students get to color and label their own fish. Using the information they learned, they can label the fish’s fins, gills, mouth, tail, head, eyes, and scales. They have to cut out the parts of the fish and then glue them to the correct line. OR they can just write out the part of the fish on the correct line. Then they can color it.3. Next they will look over the sheet that shows and explains the life cycle of a fish. This worksheet allows the student to cut out the different life phases of a fish and tape it onto the correct step so that is creates a flap. They can open the flap and read about the different life phases of a fish.4. Once they have learned about the life phases of a fish, the final activity is creating the Life Cycle of a Fish Wheel. They will have to cut out the first sheet along the dotted lines, and the same for the second sheet

	<p>(directions are on this activity sheet). Then they place a brad in the middle so the student can spin the wheel to show the different phases of the fish life cycle.</p>
--	--

**** Also attach a word document/movie/some sort of tangible product. Worksheets, puzzle pieces, game boards, etc... need to also be included as a word document or a printable pdf. The total amount of material uploaded to CougarVIEW and emailed to Ms. Johnson should be 5-10 pages. Please use as few attachments as possible.**

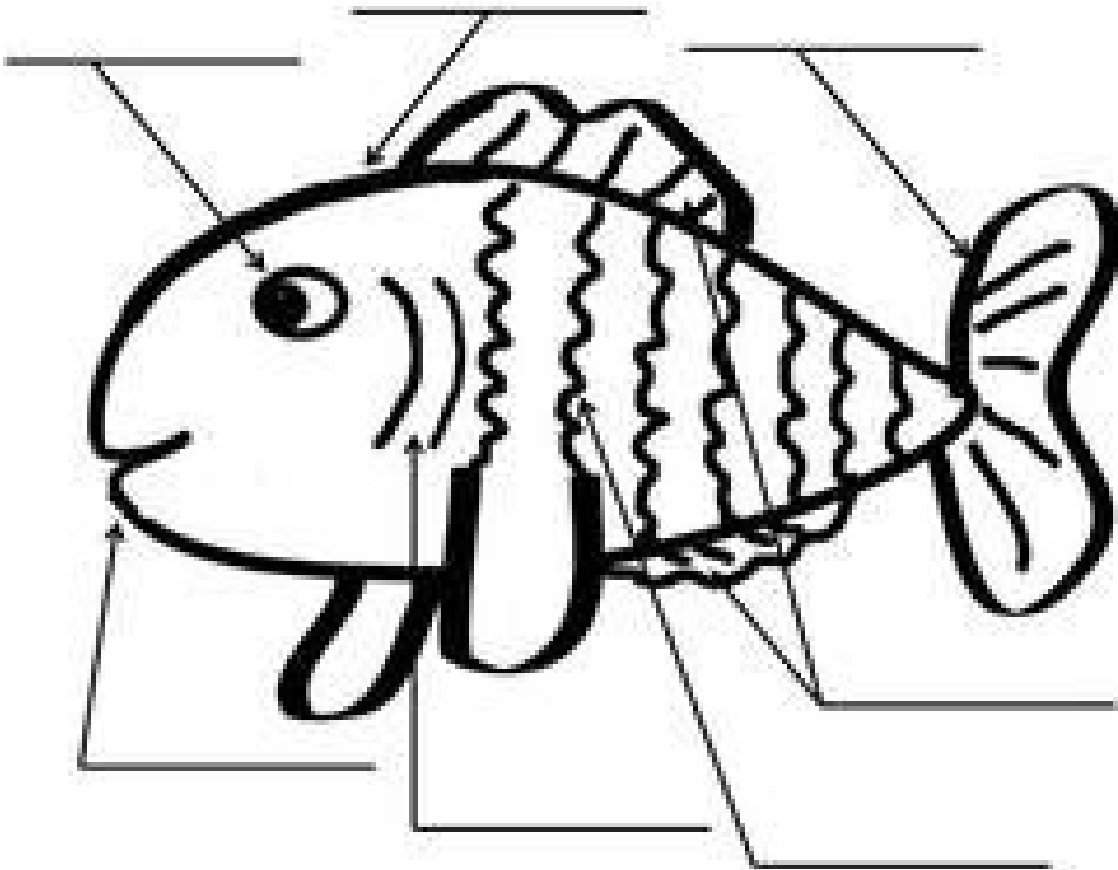
Watch this video about the fish life cycle!

https://www.youtube.com/watch?v=17cU_9Fwf-Y

Activity One: Color and Label Your Own Fish!

Name _____

Name the Parts of a Fish



fins	gills	mouth	tail
head	eye	scales	

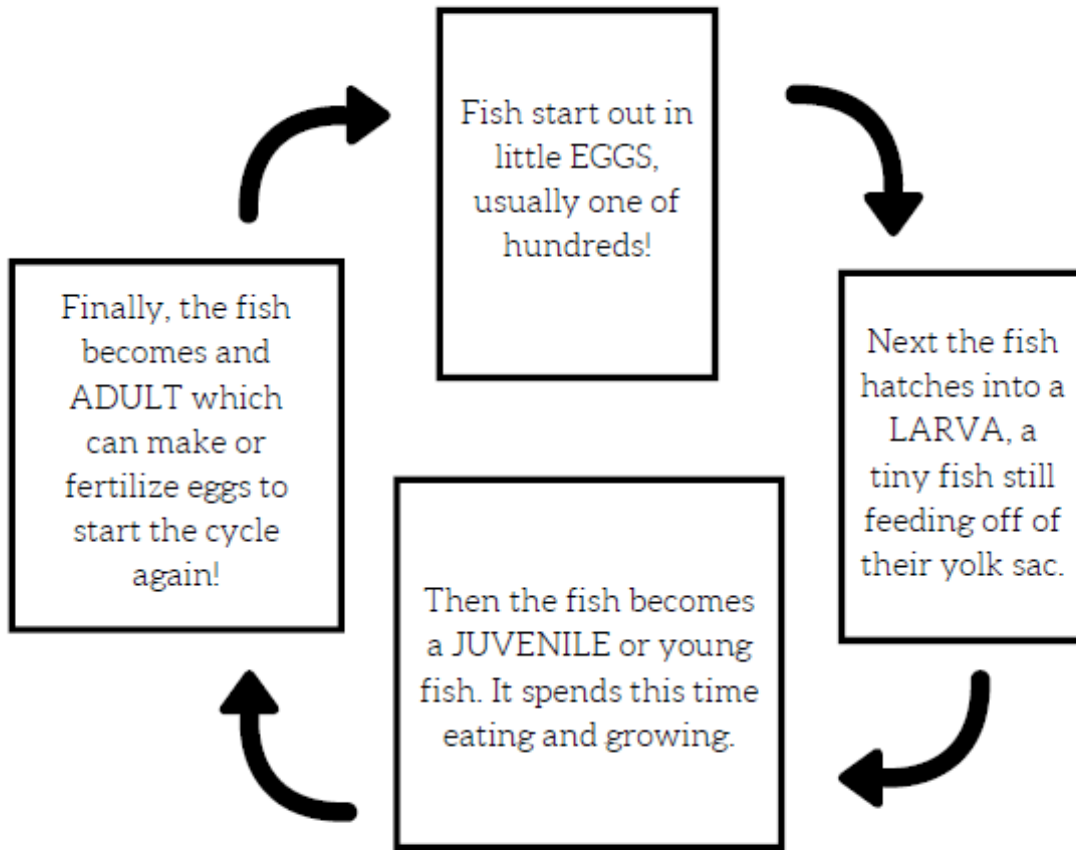
Activity Two: Label the Fish Cycle!




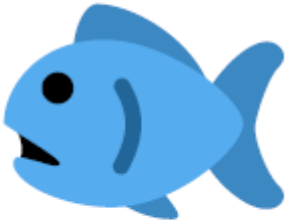
Name: _____



Fish Life Cycle

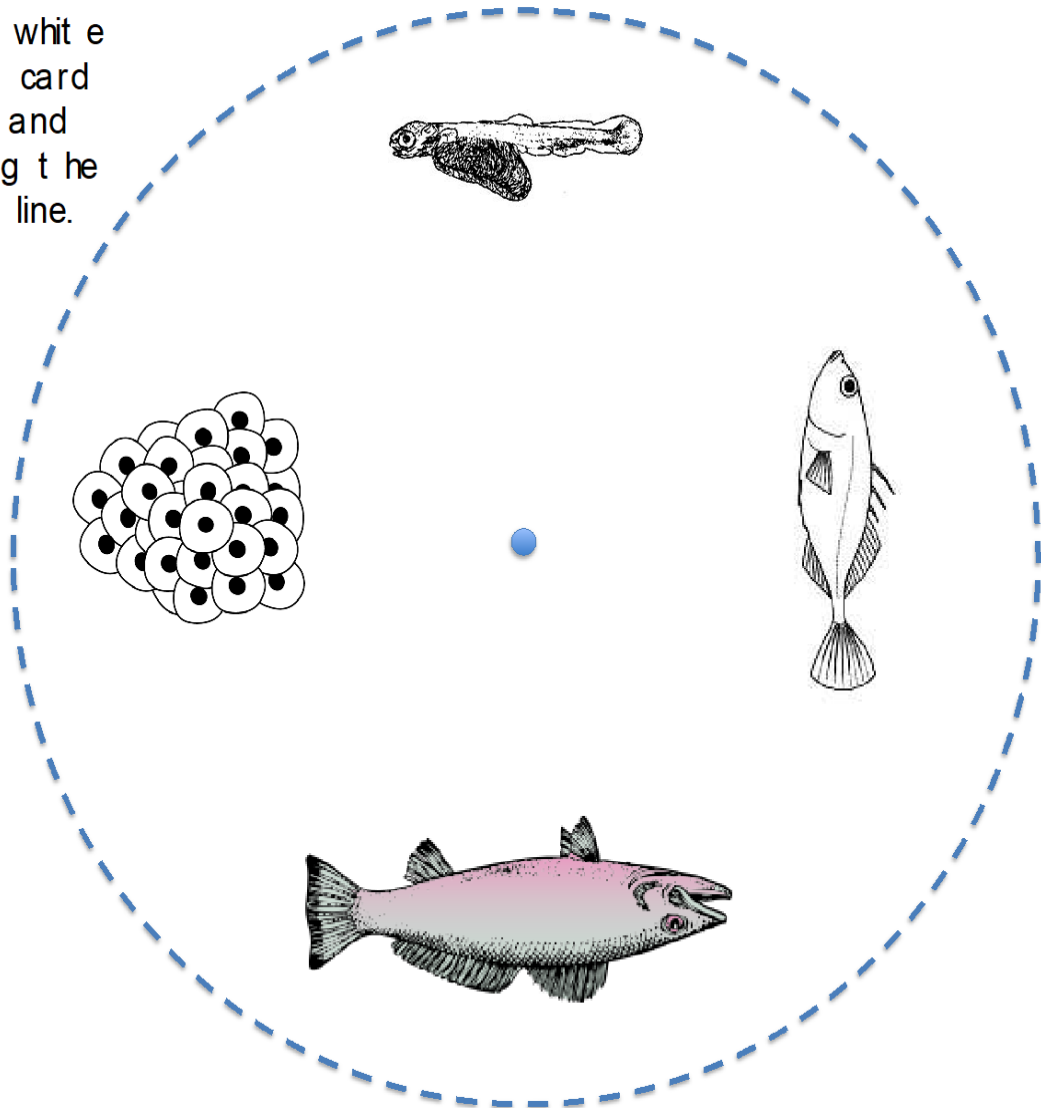
Cut out the different life phases at the bottom, then tape or staple the picture over the square to make a flap!



 EGG	 LARVA	 JUVENILE FISH	 ADULT
---	---	---	---

Activity Three: Create Your Life Cycle Fish Wheel!

Print on white paper or card stock, and cut along the dashed line.



Print on colored paper or card stock, and cut along the dashed lines.

Cut this section out of the circle to make the window.

Put this cover circle on top of the life cycle circle, and put a brad through the center.

